



TSIII CA has a verified SA surface

TSIII CA's special package

The TSIII CA is encapsulated in a CaCl₂ aqueous solution, well maintaining surface activity using special package

Specifications

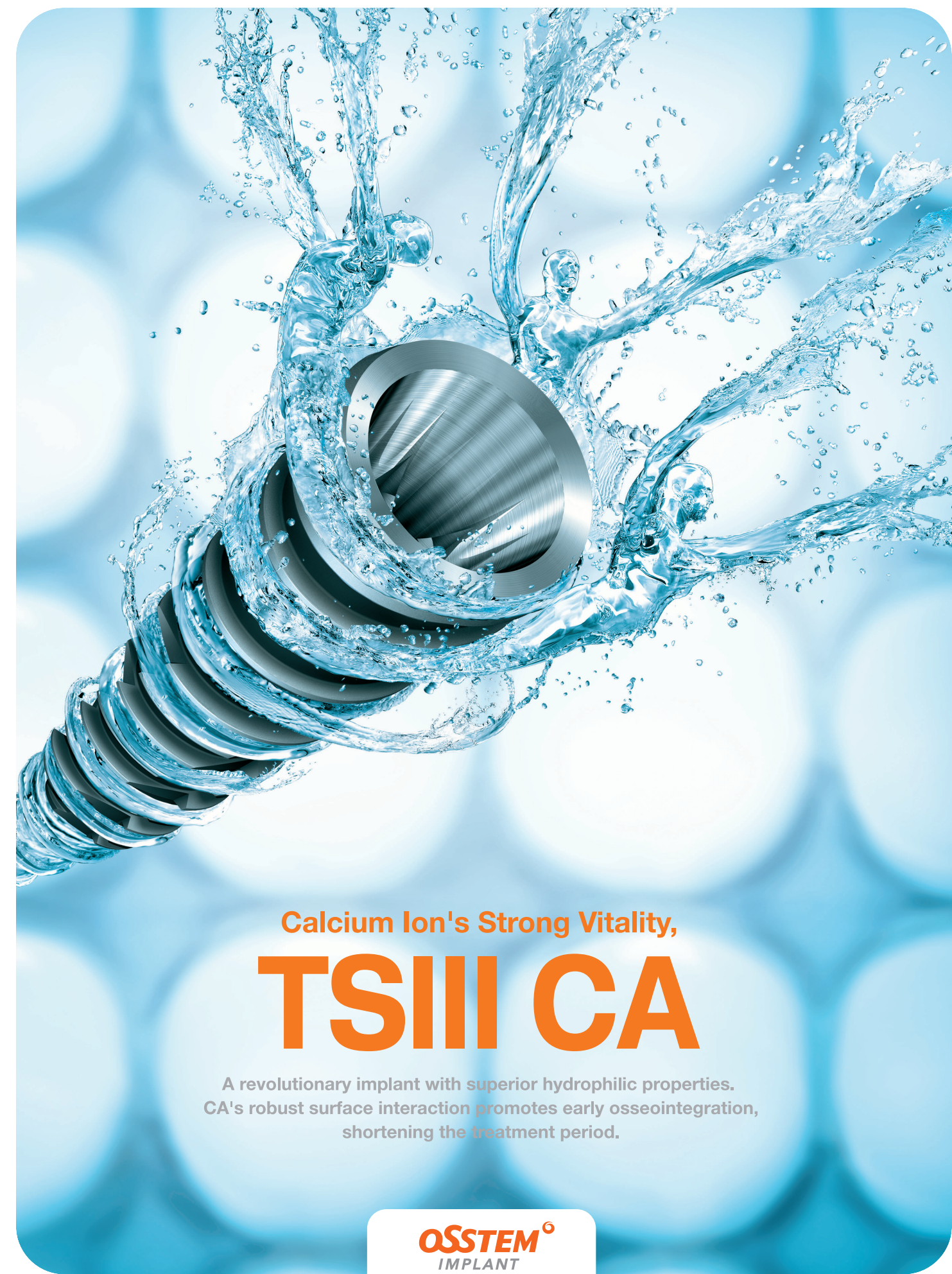
TSIII has a wide variety of diameters and lengths, totalling in 51 different implants.

Diameter		Length				
						6mm
						7mm
						8.5mm
						10mm
						11.5mm
						13mm

Osstem Implant is ever vigilant of worldwide implantology trends. We continue to invest heavily into R&D, developing superior technology and our stringent quality control ensure we provide you with the highest quality products available on the market. We strive for perfection, and that is why Osstem has received worldwide approvals including, FDA, CE and ISO and our products are used in over 45 countries.




8th FL. WorldMeridian Venture CenterII, 426-5, Gasan-dong, Geumcheon-gu, Seoul, Korea
tel_ 02 2016 7000 fax_ 02 2016 7001 www.osstem.com



Calcium Ion's Strong Vitality,

TSIII CA

A revolutionary implant with superior hydrophilic properties.
CA's robust surface interaction promotes early osseointegration,
shortening the treatment period.



What is the TSIII CA Implant?

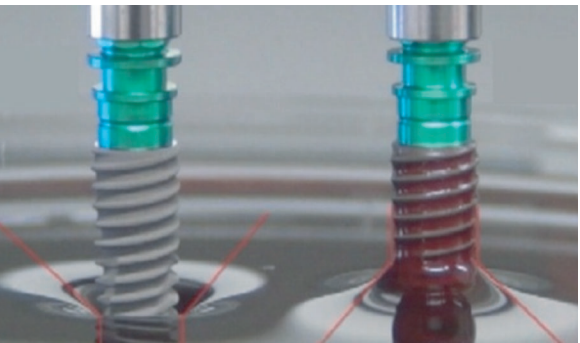
The TSIII CA maximizes SA surface activity by encapsulating in Calcium(CaCl2) aqueous solution.

The TSIII CA is impregnated with calcium ions, these ions significantly increase blood wettability and protein elicitation abilities, which it can form a stable and fast bone regeneration.



TSIII CA Feature 1 Superior Blood Wettability and the formation of blood clot

Superior Blood Wettability
: Improved blood wettability compared to the existing surface

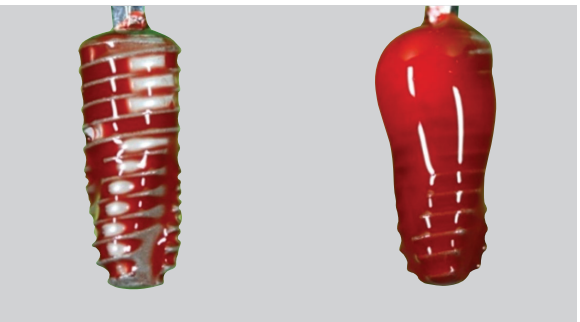


Existing surface

TSIII CA

The formation of blood clot
: Increased more than 2.4 times compared to the existing surface

► Comparison of Blood clot
(after dipping two fixtures into the blood for 20 min)



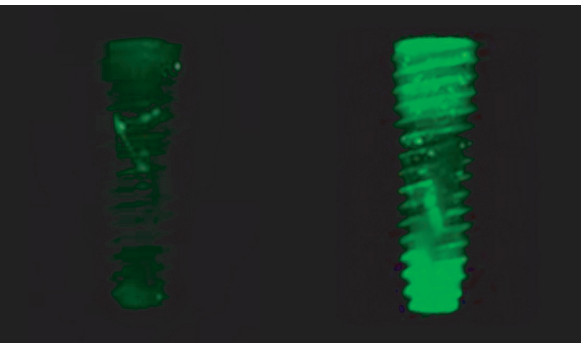
Existing surface

TSIII CA

TSIII CA Feature 2 Excellent in in-vitro evaluation

Excellent protein adsorption
: Increased more than 2.5 times compared to the existing surface

► Comparison of protein adsorption
(coated with phosphor)

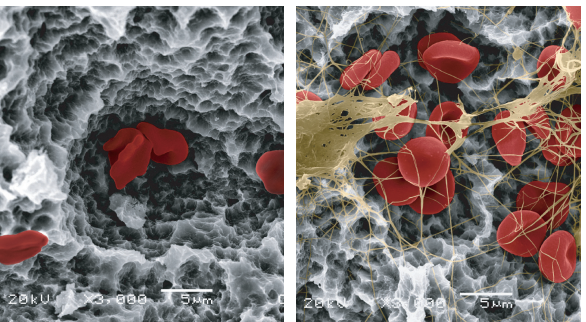


Existing surface

TSIII CA

The formation of the platelet
: Increased more than 38% compared to the existing surface

► Comparison of activity
(after attaching the blood cell)



Existing surface

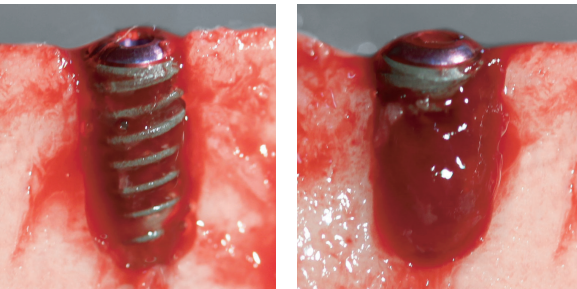
TSIII CA

Red : Red blood cell Yellow : Fibrin Network

TSIII CA Feature 3 The formation of bone tissue

Excellent formation of bone tissue
: Increased more than 41% in bone volume and 30% in fixation compared to the existing surface

► Comparison of the formation of bone tissue
(after 4 weeks with Micro-pig model)



Existing surface

TSIII CA

"We recommend TSIII CA."